

Tunkwa Lake

TUNKWA LAKE Provincial Park is home to two large lakes, Tunkwa and Leighton, with campgrounds located on both. There are three separate campgrounds, Tunkwa, Leighton and Leighton North. Combined, the three campgrounds offer 265 camping sites. This is a year-round recreation area, noted for camping, hunting, horseback riding, wildlife viewing, fishing, cross-country skiing, and snowmobiling. Nightly charge is \$8, with several sites formatted to allow multi-group camping. Reservations are not allowed; all sites are allocated on a first-come, first-served basis.



TUNKWA LAKE is located about 250 kilometres northeast of Vancouver, B.C., in the heart of the province's interior grassland country. The lake is located midway between Savona and Logan Lake on the southern Thompson Plateau, about 40 km southwest of Kamloops. Get there via 24 km of gravel road from Savona or 16 km from Logan Lake on the paved Tunkwa Lake Road. Take the Trans-Canada Highway to Savona from Kamloops or Cache Creek, or go to Logan Lake via the Coquihalla Highway.

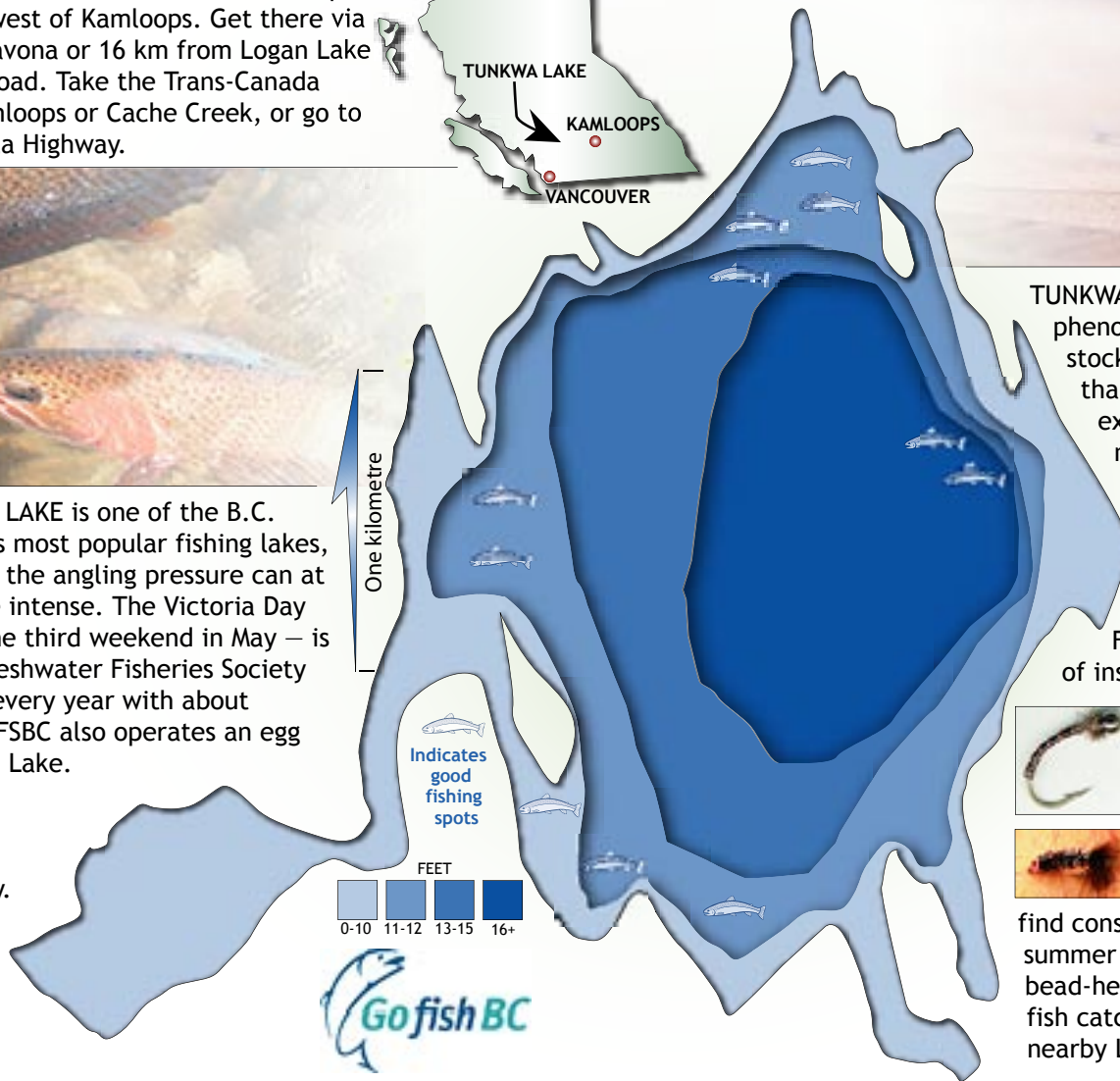
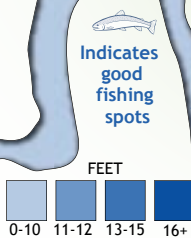


TUNKWA LAKE is one of the B.C. Interior's most popular fishing lakes, meaning the angling pressure can at times be intense. The Victoria Day

long weekend – generally the third weekend in May – is typically the busiest. The Freshwater Fisheries Society of B.C. stocks Tunkwa Lake every year with about 50,000 rainbow trout. The FFSBC also operates an egg collection station on Tunkwa Lake.

Eggs collected augment the society's provincial stocking program. Regulations allow anglers to keep six fish a day. There are no gear restrictions, but outboard motors must be less than 10 HP. The season opens May 1 and closes Nov. 30.

One kilometre



TUNKWA LAKE offers phenomenal fishing for stocked rainbow trout, thanks mostly to its extremely productive nature. The lake is very shallow, with a maximum depth of 17 feet. Fish can find food anywhere, and often grow to substantial size, four pounds and up is common.



Fly-fishermen love the big hatches of insects, notably chironomids and mayflies. Gear anglers find success with trolling outfits, spinners and even worms fished under bobbers from the shore.



Trollers often outperform others in the hot days of summer, but fly anglers can find consistent action in the spring, late summer and fall. Chironomid and small bead-head leech fly patterns are proven fish catchers at Tunkwa, as well as at nearby Leighton Lake.